

Sold

5 BEDROOM DETACHED | HELLIKER CLOSE, PAXCROFT MEAD, BA14 | OFFERS OVER £400,000

DESCRIPTION

This substantial five-bedroom family home is beautifully presented and cleverly positioned in a quiet cul-de-sac location. Resting on the outskirts of the popular Paxcroft Mead development overlooking parkland at the front and with-in easy walking distance to The Mead Community Primary School rated good by Ofsted. Close to woodland walks and local amenities, this well-designed house provides plenty of space for any family.

On the ground floor there is a light and spacious reception hall with a cloak room, stylish kitchen / dining area with French doors leading out to the rear patio, double doors leading to the 19ft sitting room also with French doors giving access to the delightful sunny rear garden and a snug to relax in after a long day. Upstairs there is a desirable master bedroom with a dressing area with parkland views and an en-suite bathroom with separate shower, two more double bedrooms and a family bathroom also with a separate shower. On the top floor there are two more double bedrooms with their very own shower room between them.

The south facing rear garden has been very well designed to provide a superb space for entertaining guests, with it's decked sitting area and clever planting, it would be easy to relax and enjoy the sun all day long if required. There is plenty of parking at the front, a large double garage with a pitched roof also with a door to the rear garden.

Helliker Close is very close to The County Town of Trowbridge that provides many amenities that include St Augustine' Catholic Collage, The John of Gaunt School, The Clarendon Academy and Trowbridge Collage. There is also a cinema complex, a Marks & Spences Food Hall and many other shopping facilities, many sports facilities and a main line train station with services to London Waterloo.



Bradford on Avon is approximately four miles away, a historical market town with amenities including a supermarket, individual retail outlets, beautiful river and canal walks, doctors surgery and a swimming pool. The World Heritage City of Bath is approximately twelve miles away and just an eighteen minute train journey from Trowbridge Train station. Bath has many fine restaurants and bars, a full range of retail outlets and sporting facilities. Cultural interests include Theatre Royal, Thermae Spa and numerous museums and galleries.

Train stations can also be found in Bradford on Avon and Westbury, providing direct access to the cities of Bath, Bristol and South Wales.

Westbury railway station and the mainline station in Bath also provide direct access to London Paddington.

Tenure: Freehold

Council Tax Band: F

Services: Mains gas, water, electricity and drainage

Local authority: Wiltshire County Council

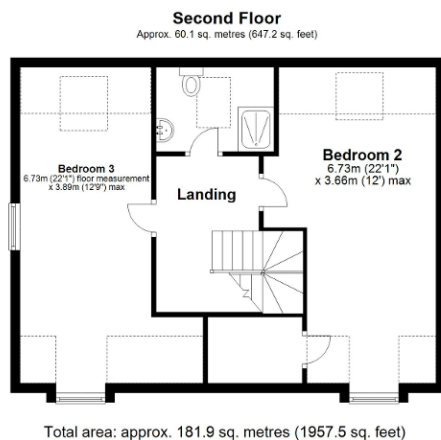
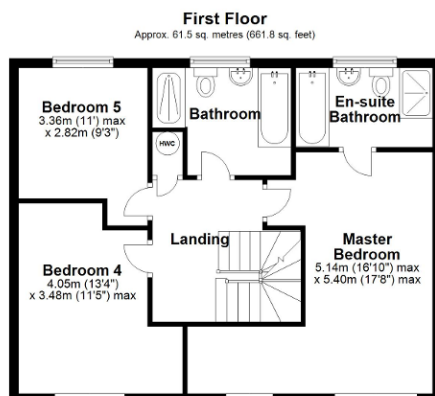
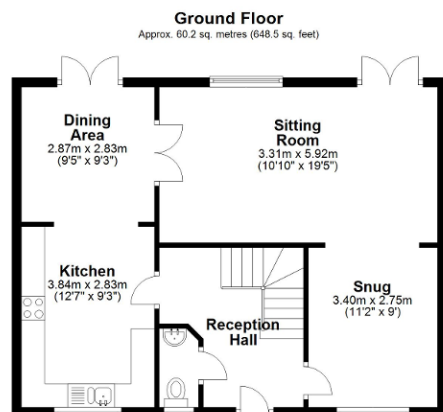
EPC rating: B

KEY FEATURES

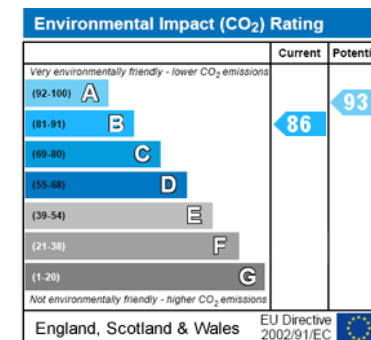
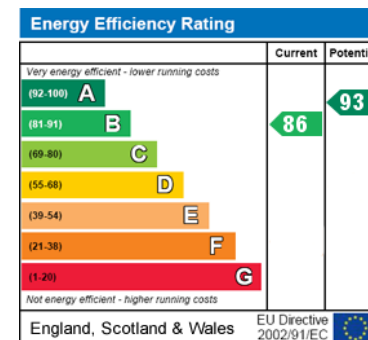
- Substantial family home
- Countryside views
- Beautiful Kitchen / dining room
- Four further large bedrooms
- Ample parking
- Quiet desirable location
- Large sitting room and snug
- Master bedroom with en-suite bathroom
- Large double garage
- South facing rear garden







ENERGY EFFICIENCY



DISCLAIMER

These particulars are thought to be materially correct though their accuracy is not guaranteed and they do not form part of any contract. All measurements are approximate and we have not tested any fitted appliances, electrical or plumbing installation or central heating systems.

APPLEBY & TOWNEND

4D Broad Lane Farm
Seend
Melksham
Wiltshire, SN126RJ

Tel: 01225 983 910
E-mail: help@applebyandtownend.co.uk
Web: www.applebyandtownend.co.uk